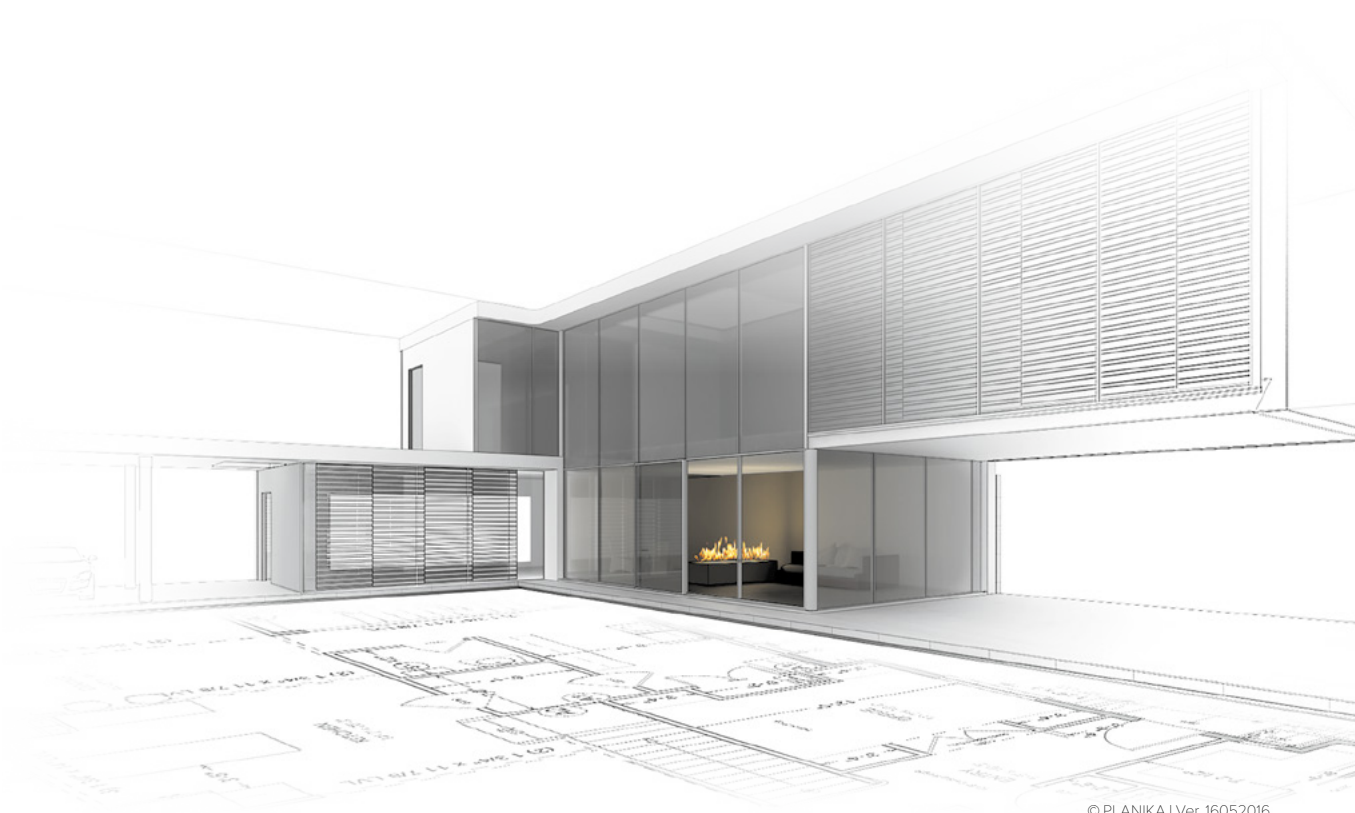


# PushButtonFireplaces

intelligent fire



© PLANIKA | Ver.16052016

# HotBox PushButton Fireplaces

HotBox

## HotBox

To insert into existing fireplace  
Relight and upgrade your living space

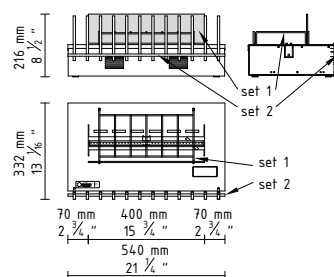


### FEATURES:

- BEV\* Technology
- Portable unit
- No smell / no ash / no smoke
- Optional remote control
- Advanced safety sensors
- Automatic shutdown in case of errors
- Child Lock
- Advanced microprocessor
- Diode display
- Control panel
- Intuitive control
- 2 levels of flame height
- Easy installation
- Possibility of joining modules
- No additional installation
- No additional ventilation required
- No chimney required
- Electrical connection required
- For indoor use
- Optional decorative accessories
- Eco-friendly
- TÜV Certified



### DIMENSIONS:

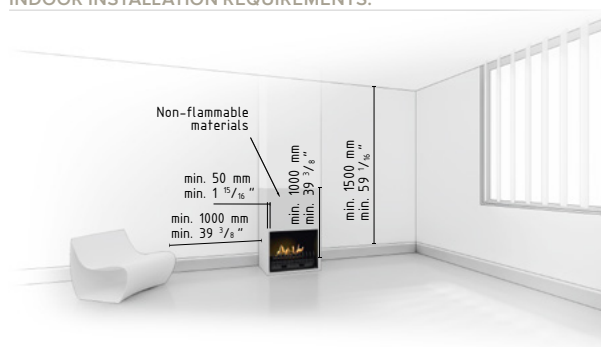


\* BEV Technology – A patented process resulting in the clean burning of bio-ethanol fuel vapours.

### TECHNICAL DATA:

Capacity: 2,5 L / [US] 0,65 gal / [UK] 0,55 gal  
 Burning time: 2,5 - 5 h  
 Heat output: 3,3 - 5,6 kW / 11396 - 18993 BTU  
 Net weight: 11,5 kg / 25 lbs  
 Air circulation: min. 1/h  
 Minimum room size:  
 please contact our Project Department for details  
 Power supply: 230 V / 115 V  
 Finish:  
 TOP: black powder coated steel,  
 CASING: galvanized steel,  
 OPTIONAL SET 1:  
 DECORATIVE GRATE: black powder coated steel,  
 OPTIONAL SET 2:  
 GLASS SHIELD: hardened glass,  
 GRILL: stainless steel,  
 3 x BILLETS: ceramic

### INDOOR INSTALLATION REQUIREMENTS:



download [PRODUCT INSTRUCTION](#)

