

VERTICAL CURVED AX ZENITH 800 B POST-COMBUSTION



Standard NF – EN 13229. Certified by C.T.I.F.

Type I.S.B. SF EM

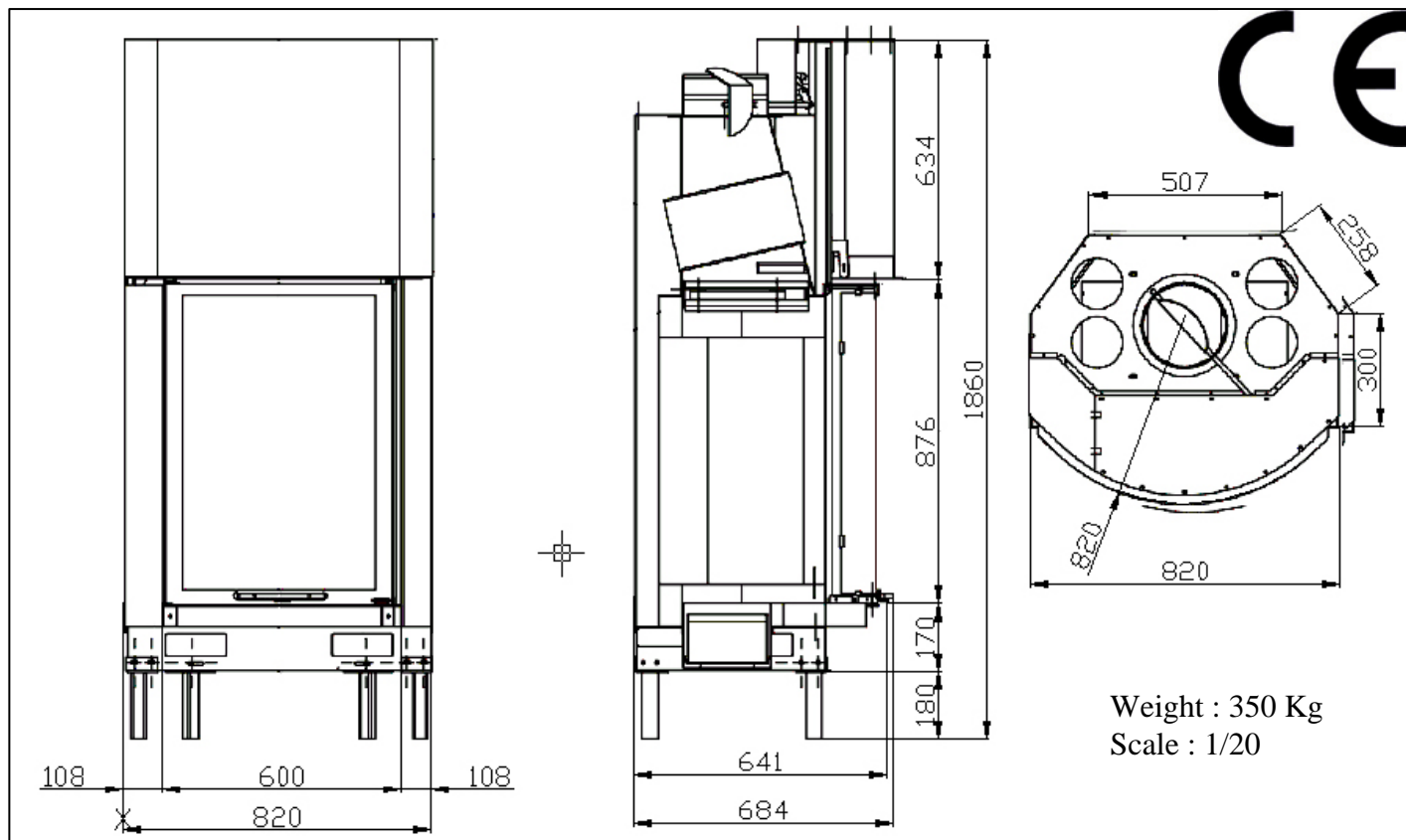
- Nominal power : 11 kwh
- Consumption : 4.3 kg
- Co at 13% of O² : 0.17 %
- Appliance efficiency : 71,7 %
- Dust : < 100 mg/Nm³
- Smoke temperature : 316° C
- % of loss through unburned solids : 0
- Autonomy of heater through inertia of refractive bricks: => 10 h
- Authorised fuel: wood logs NF G1-H1

CONDITIONS REQUIRED FOR FUNCTION

- Chimney air column pressure: 12/20 PA
- Obligatory fresh air intake: 300 cm² minimum
- Convection air intake: 600 cm² minimum, if necessary remove the detachable shields.
- Convection air outlets: 647 cm² minimum with decompression

STANDARD EQUIPEMENT

- Draw control command with automatic opening on lifting the doors
- Protective surround for raised door
- Convection lining
- Moveable and detachable air inlets in base frame
- Removable feet
- Fire basket
- Smoke evacuation Ø 230 – hot air outlets Ø 125



AXIS : ZA La Pélissière – 01300 BELLEY FRANCE

Tél : 00 33 4 79 81 10 50 – Fax : 00 33 4 79 42 21 24

Email : contact@cheminees-axis.com/ Site internet : www.cheminees-axis.com